

**Stream Status**

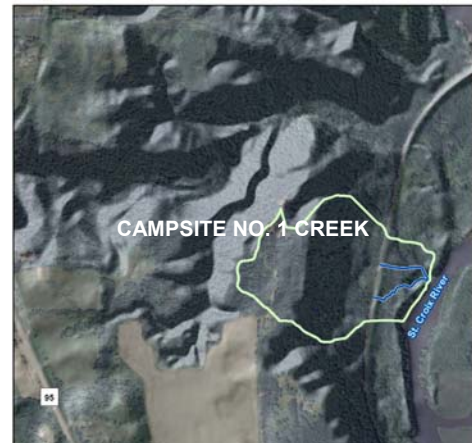
**Overall Strategy:** Routine Watershed Management

**Water Quality Rating:** B+

**Stream Class:** Groundwater Small Watershed Nonurban (GWS)

**Stream Type:** Slightly entrenched, sand and gravel dominated, meandering channel, incised in depositional material. This stream is unstable due to high sediment supplies available from both upland and channel derived sources.

**Subwatershed Land Cover:** 12% developed, 64% forests and woodlands, 7% planted or cultivated, 17% wetlands.



**Macroinvertebrate Data (2002-2003)\***

Metric	Score	Mean of Spring Creeks
Chironomidae Species Richness	16	21
Invertebrate Taxa Richness	29	31.75
HBI	4.50	4.4
% EPT	49.33	36.9
Most Common Families	Midges, Black Flies and Small Minnow Mayfly	

**Water Chemistry (2000-2002)\***

Parameter	Site Mean	Site $\sigma$	MPCA NCHF Benchmark MIS/St. Croix River		Mean of Spring Creeks
			90	55	
TP [ $\mu\text{g/L}$ ]	41.14	9.98	90	55	42.47
NO <sub>2</sub> +NO <sub>3</sub> [mg/L]	1.82	0.59	0.1	0.203	2.15
TSS [mg/L]	11.52	9.54	8.8	7.5	15.96
Temperature [C]	10.20	2.85	13.0	10.3	9.95

\*Refer to 2010 Watershed Management Plan Section V, Stream Management Plans for definitions of macroinvertebrate metrics and water chemistry parameters.

**BASIC FACTS**

<b>Section</b>	7
<b>Township</b>	32
<b>Range</b>	19
<b>Stream Length</b>	0.22 miles
<b>Subwatershed Area</b>	34 acres
<b>Baseflow</b>	0.54 cfs
<b>Bankfull Flow</b>	1.86 cfs
<b>Entrenchment Ratio</b>	1.50
<b>Width:Depth Ratio</b>	8.00
<b>Sinuosity</b>	1.98
<b>Slope</b>	0.02
<b>Rosgen Class</b>	G4
<b>DNR Trout Stream</b>	No

**Fish Species:** N/A

**CMSCWD References:**  
Lower St. Croix River Spring Creek Stewardship Plan ('03)

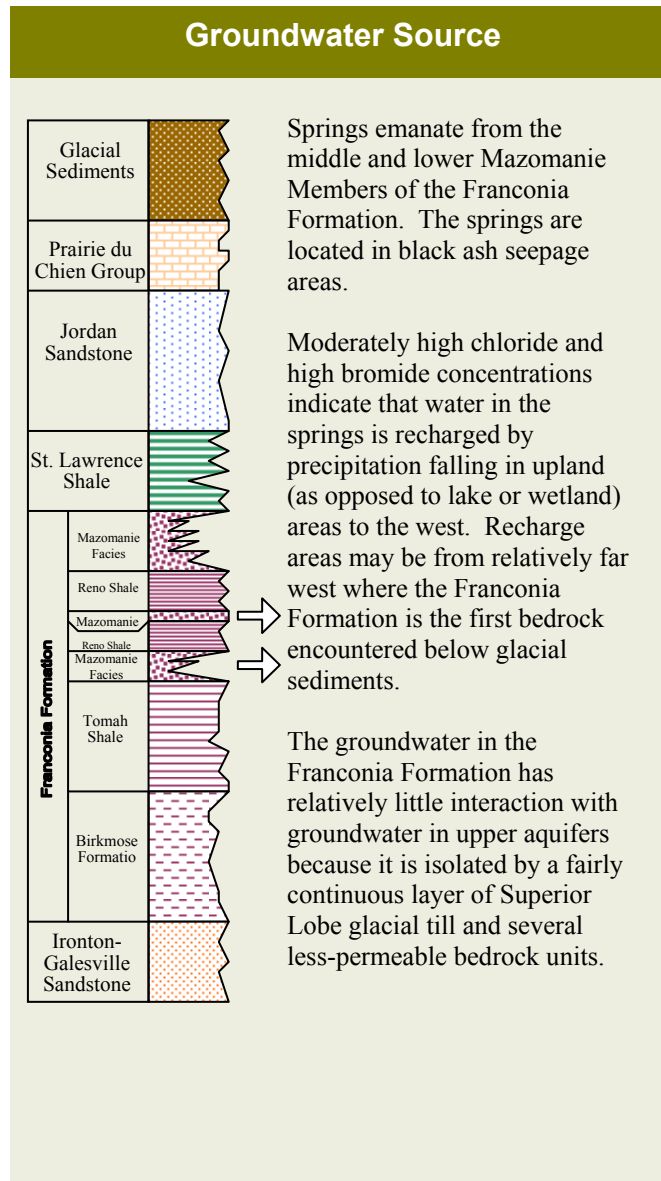
## Overall Assessment: Campsite No. 1 Creek

Campsite No. 1 Creek is located just south of the swing bridge on National Park Service (NPS) Property. This creek is fed by two tributaries that drain a seepage area along the west side of the Wisconsin Central Rail Tracks. Each of the tributaries flows for approximately 500 feet and then join before cascading down a steep ledge to the St. Croix River. The 30-acre watershed is completely forested and undeveloped.

Except for the last 200 feet, this stream flows entirely through an MCBS-mapped black ash seepage swamp and seepage meadow. An area of wet prairie that grades into dry prairie is located just to the north of this stream. Numerous sightings of Red Shouldered Hawks (*Buteo lineatus*), a state special concern species, are known from this area. Fisheries habitat is marginal due to much of the stream flowing through peat and fine sediments with little protective cover, pools or riffles.

Based on macroinvertebrate data from the 2003 *Lower St. Croix River Spring Creek Stewardship Plan*, Campsite No. 1 has a good water quality rating of 'B+.' Hilsenhoff's biotic index (HBI) is good, and the data show a very good percent EPT (percent of pollutant intolerant mayflies, stoneflies and caddisflies in the sample).

The Blanding's turtle (*Emydoidea blandingii*) is a state-listed threatened species that may be encountered throughout the watershed.



## Key Management Recommendations

- The NPS should monitor campsite use to ensure that bank erosion or other campsite-use related impacts do not occur.
- Maintain setbacks on bluff line above seepage swamp source of creek with buffer of native vegetation. Should roads or other impervious surfaces be created upslope of seepage swamp, maintain predevelopment stormwater rate and volume.

\* See 2010 *Watershed Management Plan* Section V, *Stream Management Plans* for additional information on District stream management activities.